

Figure 26 — Radio Receiver BC-348-J, Schematic Diagram

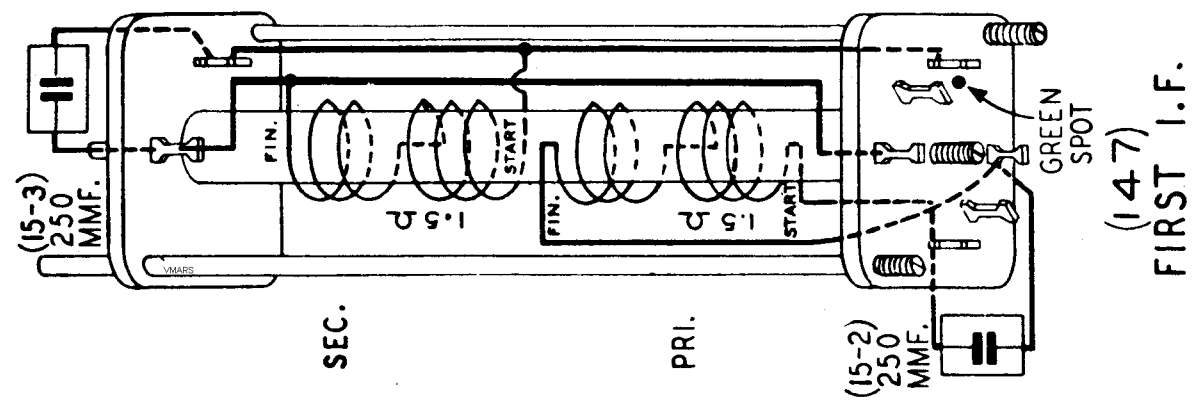
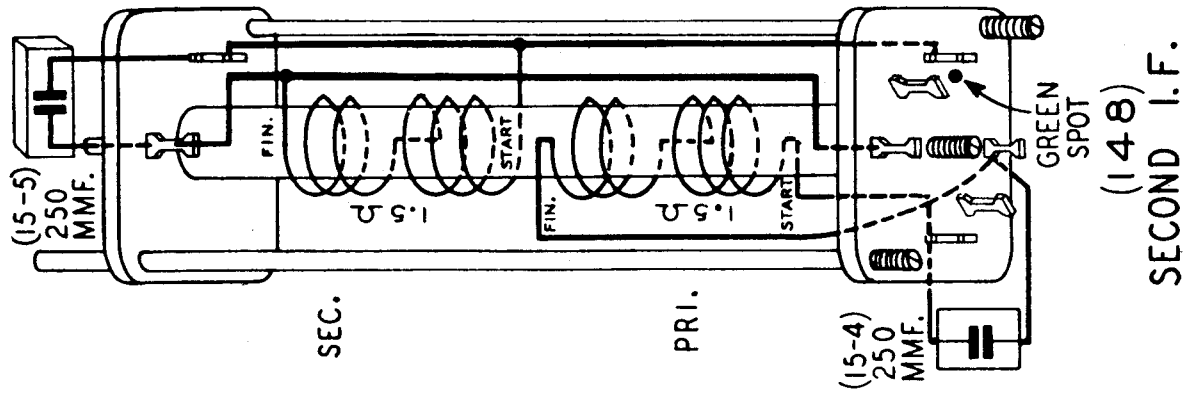
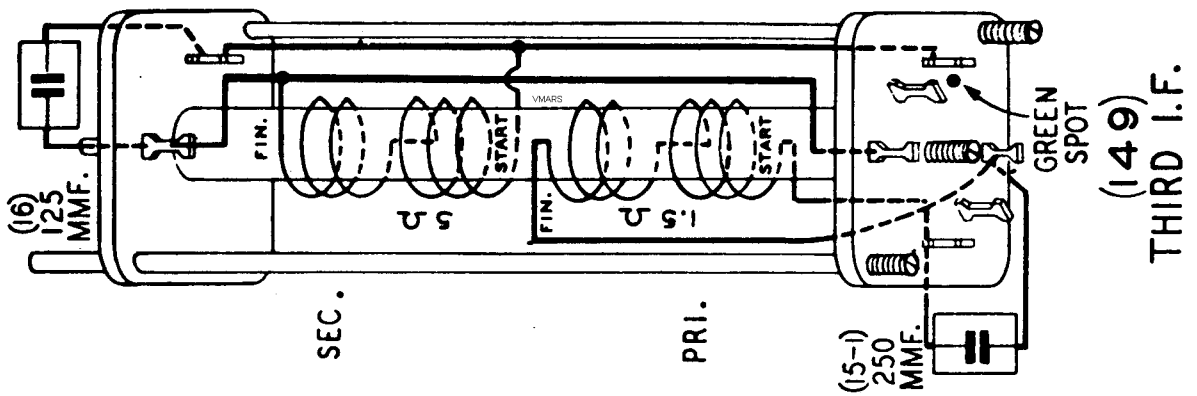


Figure 27 — I-F Transformers, Wiring Diagram

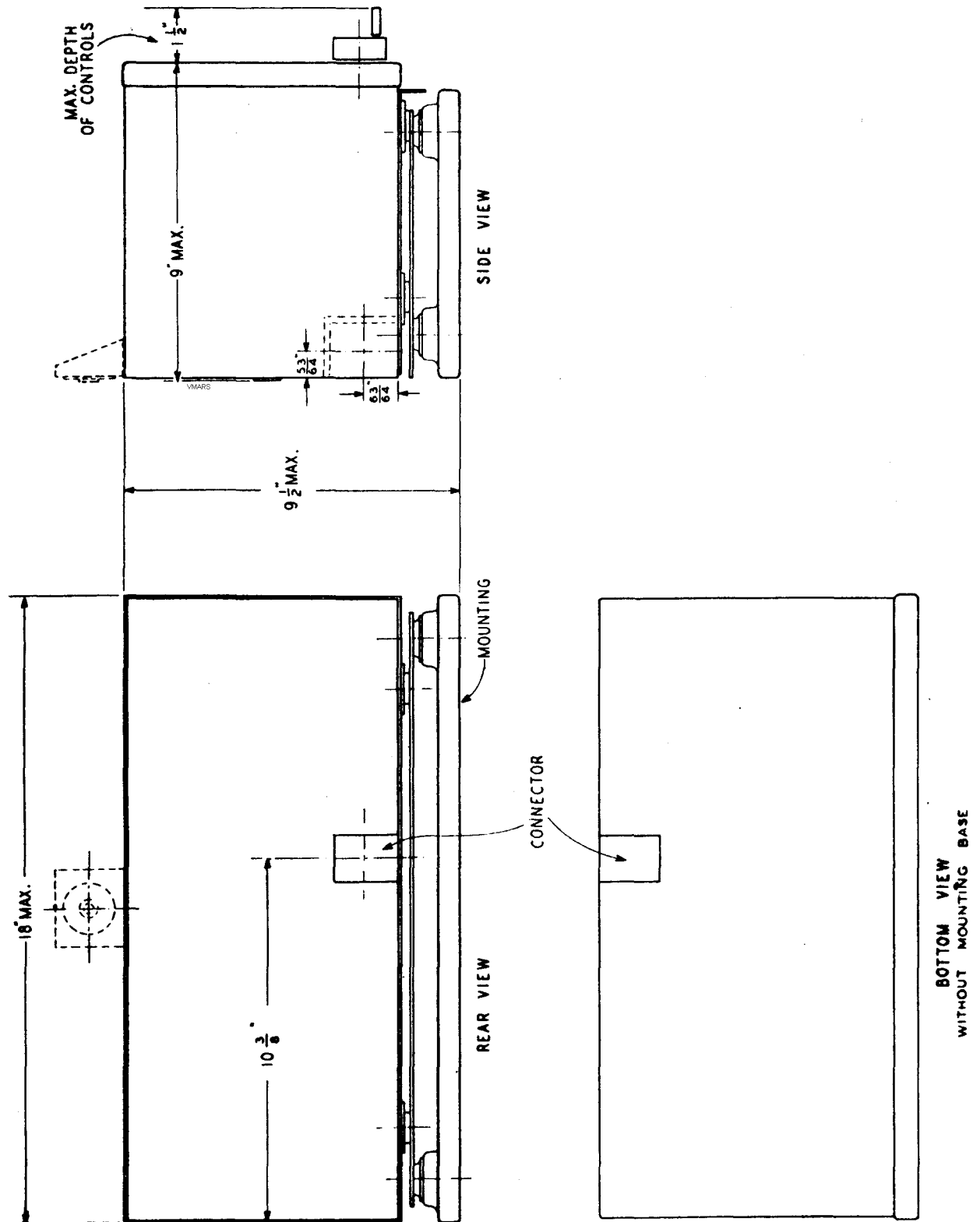


Figure 28 — Radio Receiver BC-348-J, Outline Dimensional Sketch

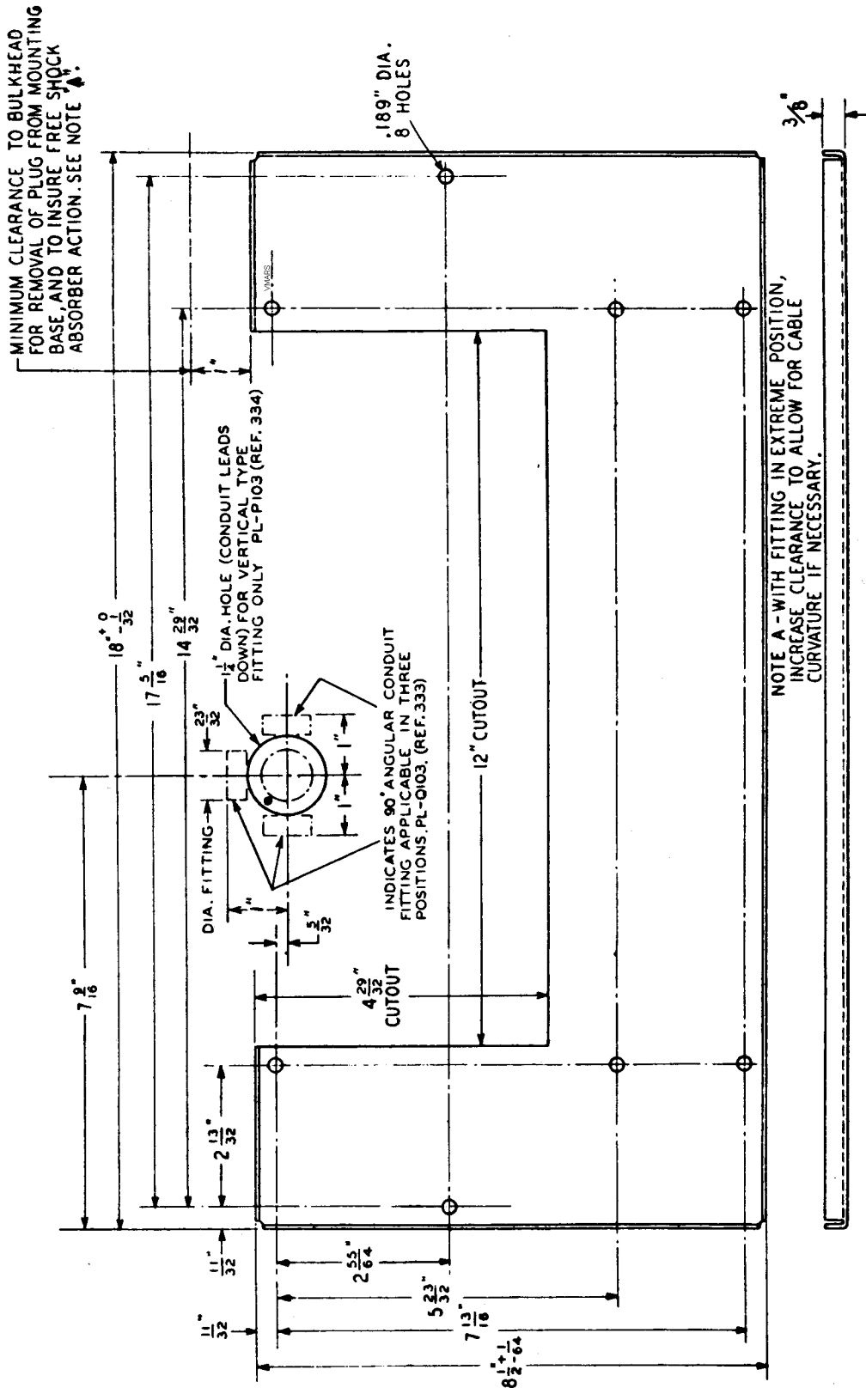
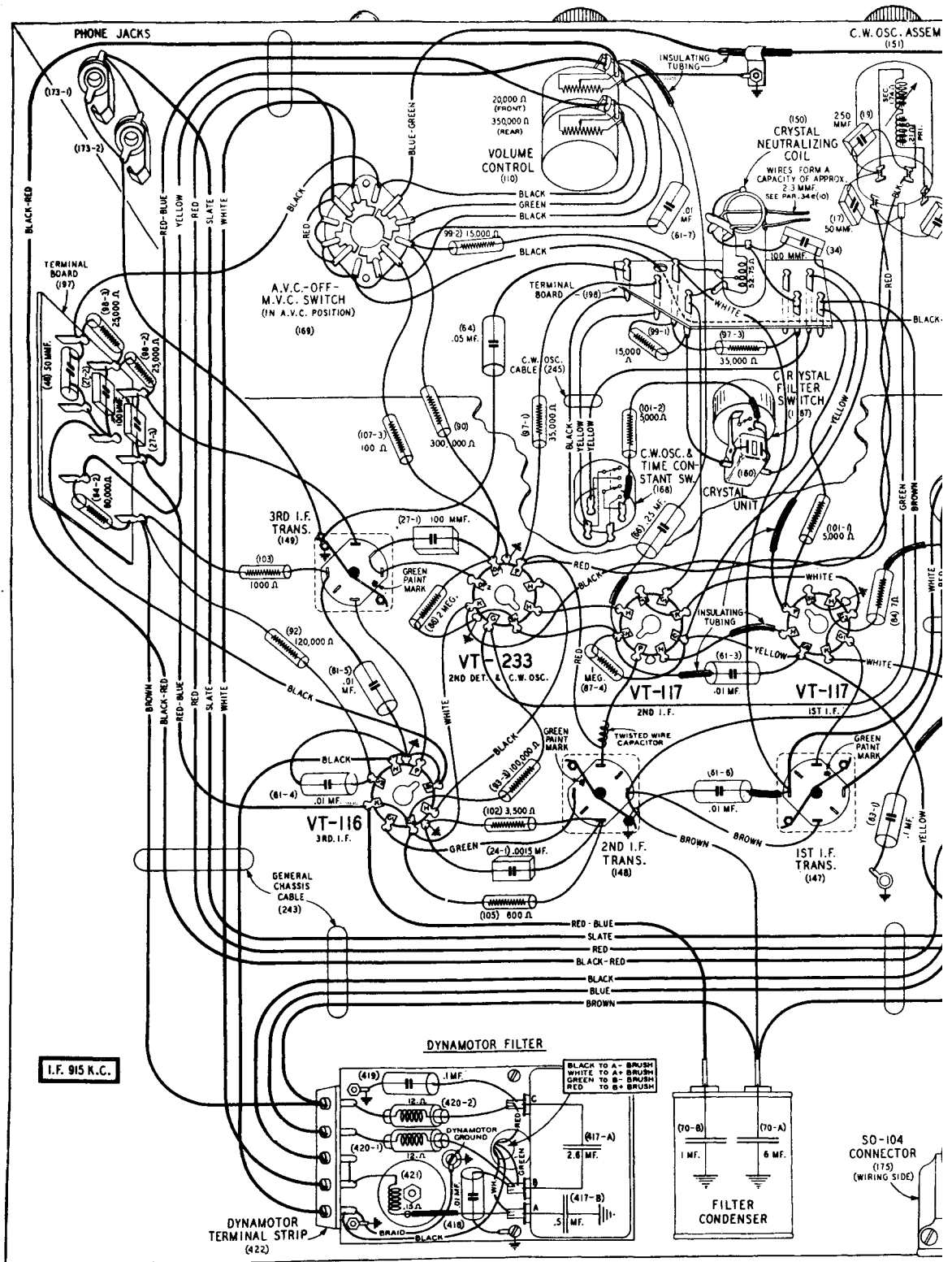


Figure 29 — Mounting FT-154-J, Drilling Plan



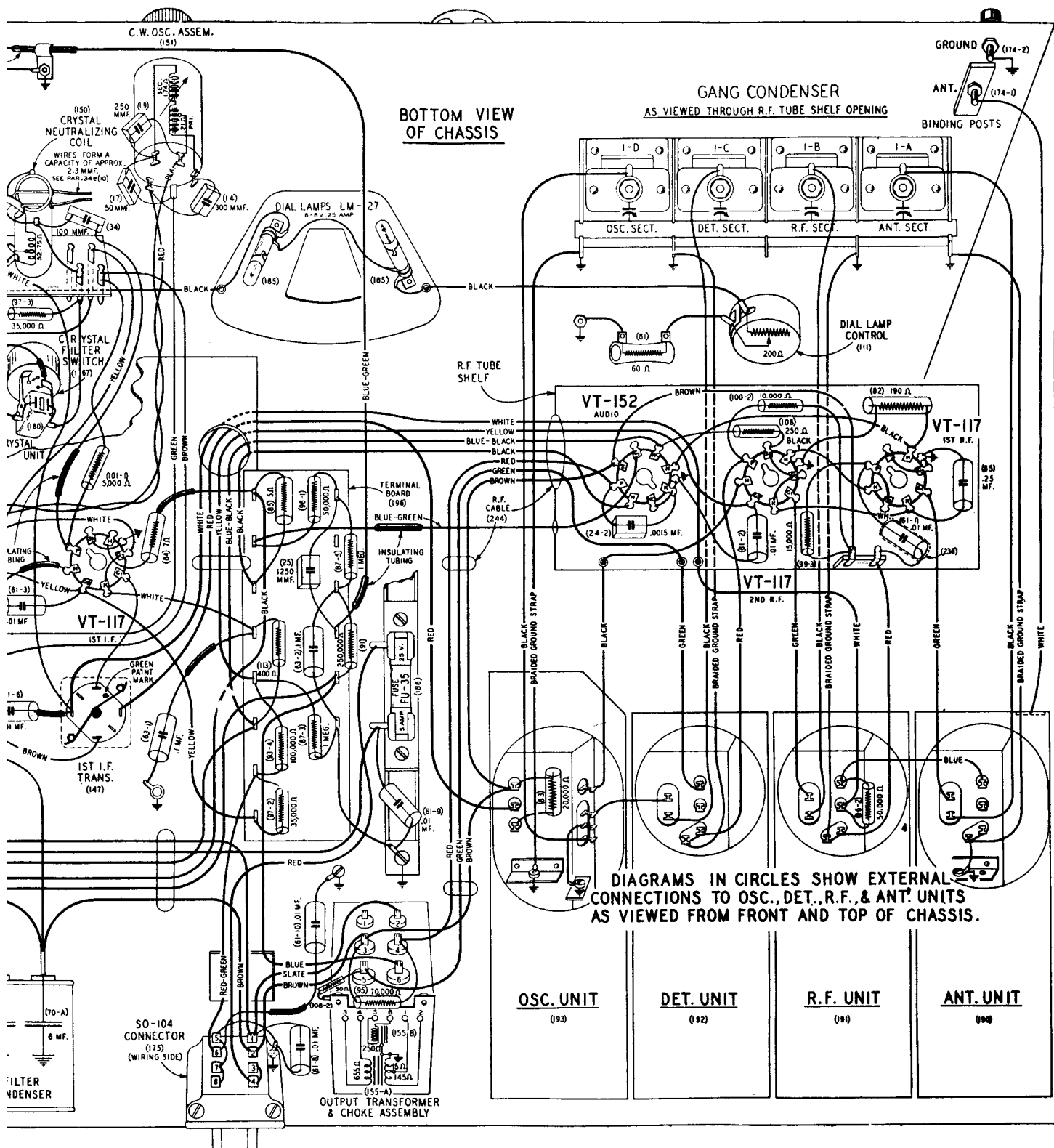


Figure 30 — Radio Receiver BC-348-J, Wiring Diagram of Chassis

NOTE -
TURN BAND SWITCH TO
BAND COIL IS IN, BEFORE
READING COIL RESISTANCES

ALL BAND SWITCH SECTIONS
ARE SHOWN IN THE NO. 6
POSITION (13.5-18 M.C.)

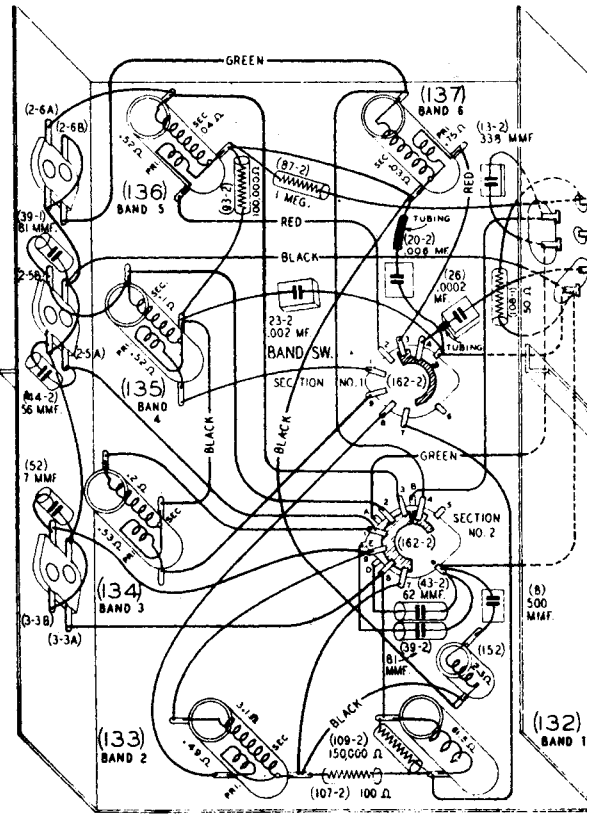
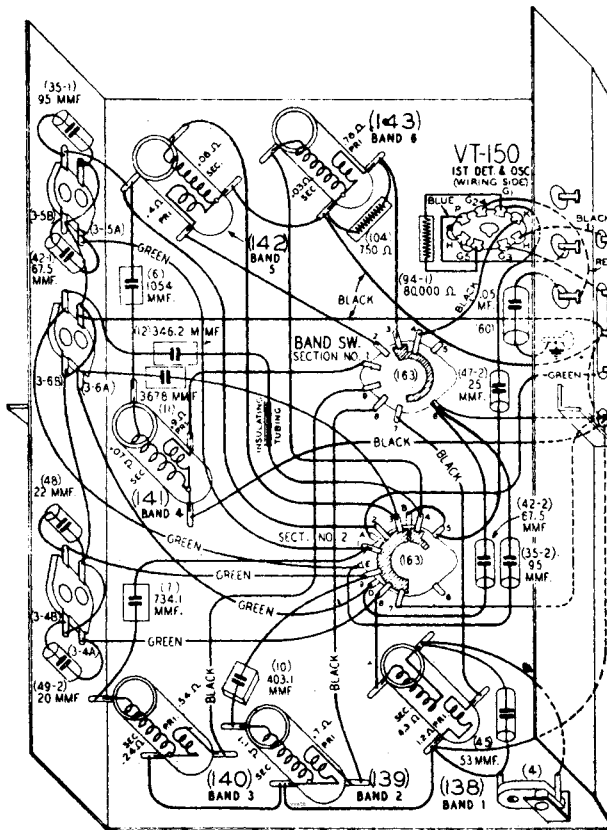


OSC. BAND SWITCH CONNECTIONS

SECT.	POS.1	POS.2	POS.3	POS.4	POS.5	POS.6
NO.1 FRONT	4-7	4-8	4-9	1-4	2-4	3-4
SECT. FRONT	8	7-8-9	1-7-8-9	2-1-7-8-9	3-1-2-7-8-9	4-1-2-3-7-8-9
NO.2 REAR	A-B	A-B	A-B	A-B	B A-D	B E-A

DETECTOR BAND SWITCH CONNECTIONS

SECT.	POS.1	POS.2	POS.3	POS.4	POS.5	POS.6
NO.1 FRONT	4-7	4-8	4-9	1-4	2-4	3-4
SECT. FRONT	8	7-8-9	1-7-8-9	2-1-7-8-9	3-1-2-7-8-9	4-1-2-3-7-8-9
NO.2 REAR	A-B	A-B	A-B	A-B	B A-D	B E-A



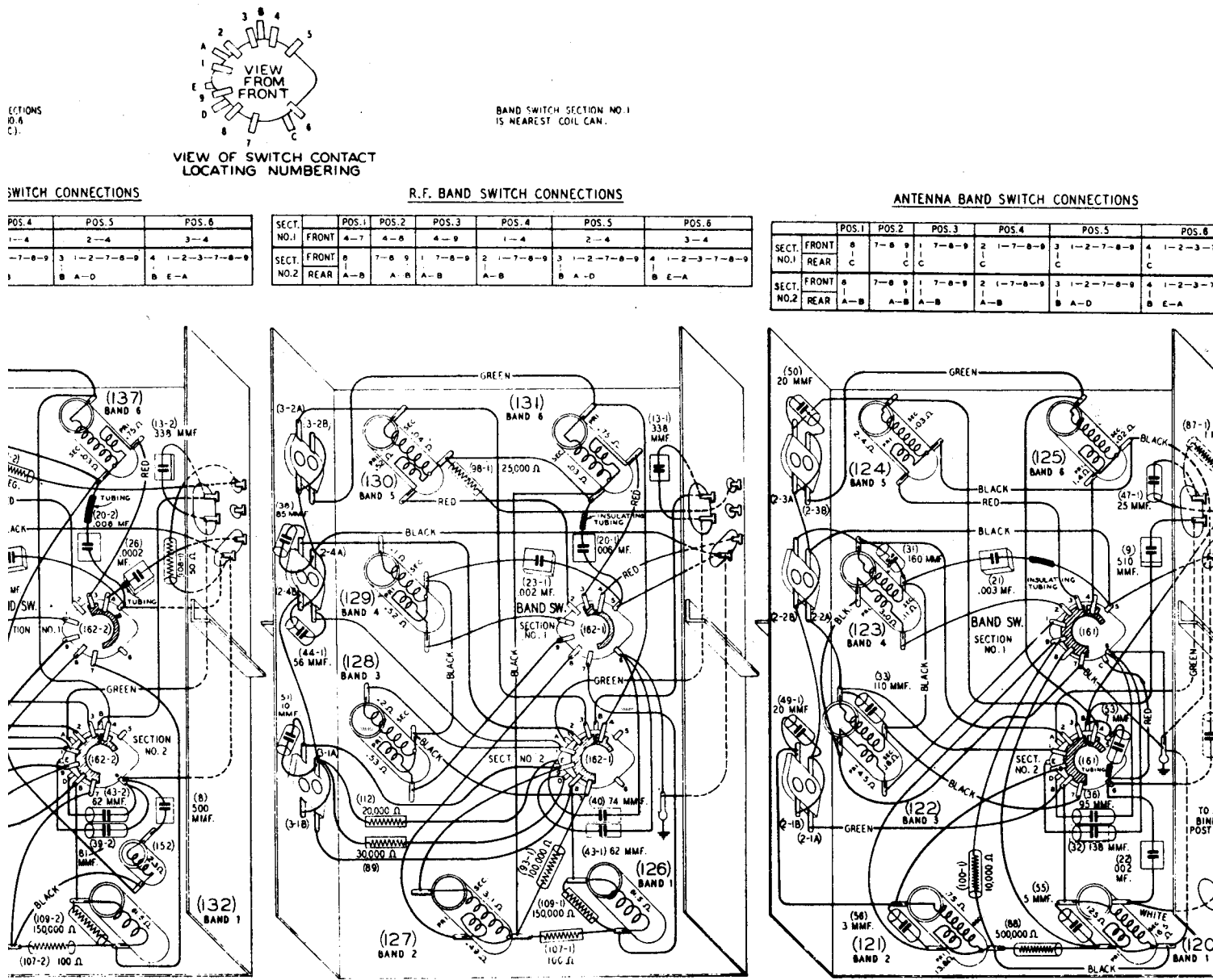


Figure 31 — Antenna, R-F, Detector and Oscillator Units, Wiring Diagram

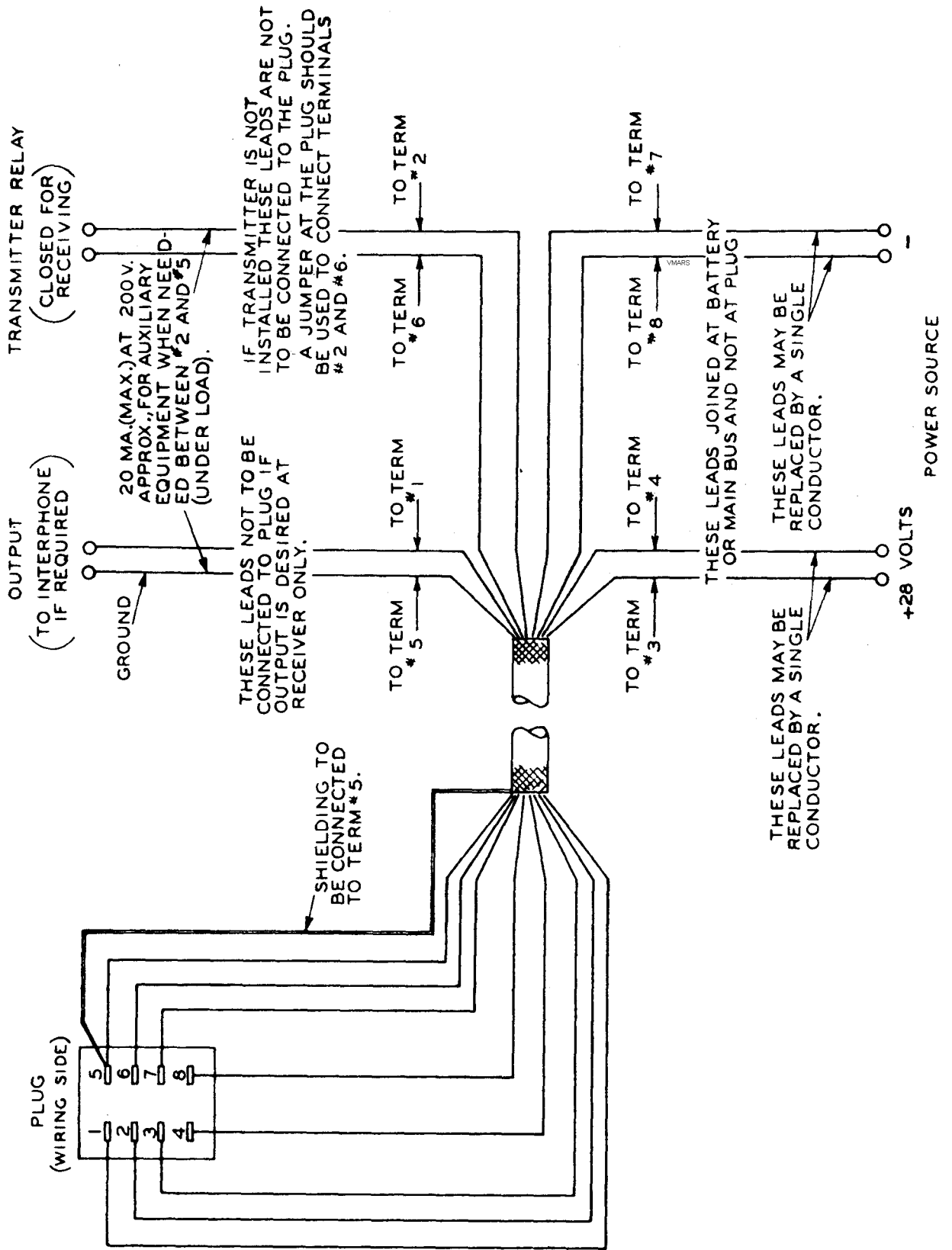


Figure 32 — Radio Receiver BC-348-J, Plug Connections