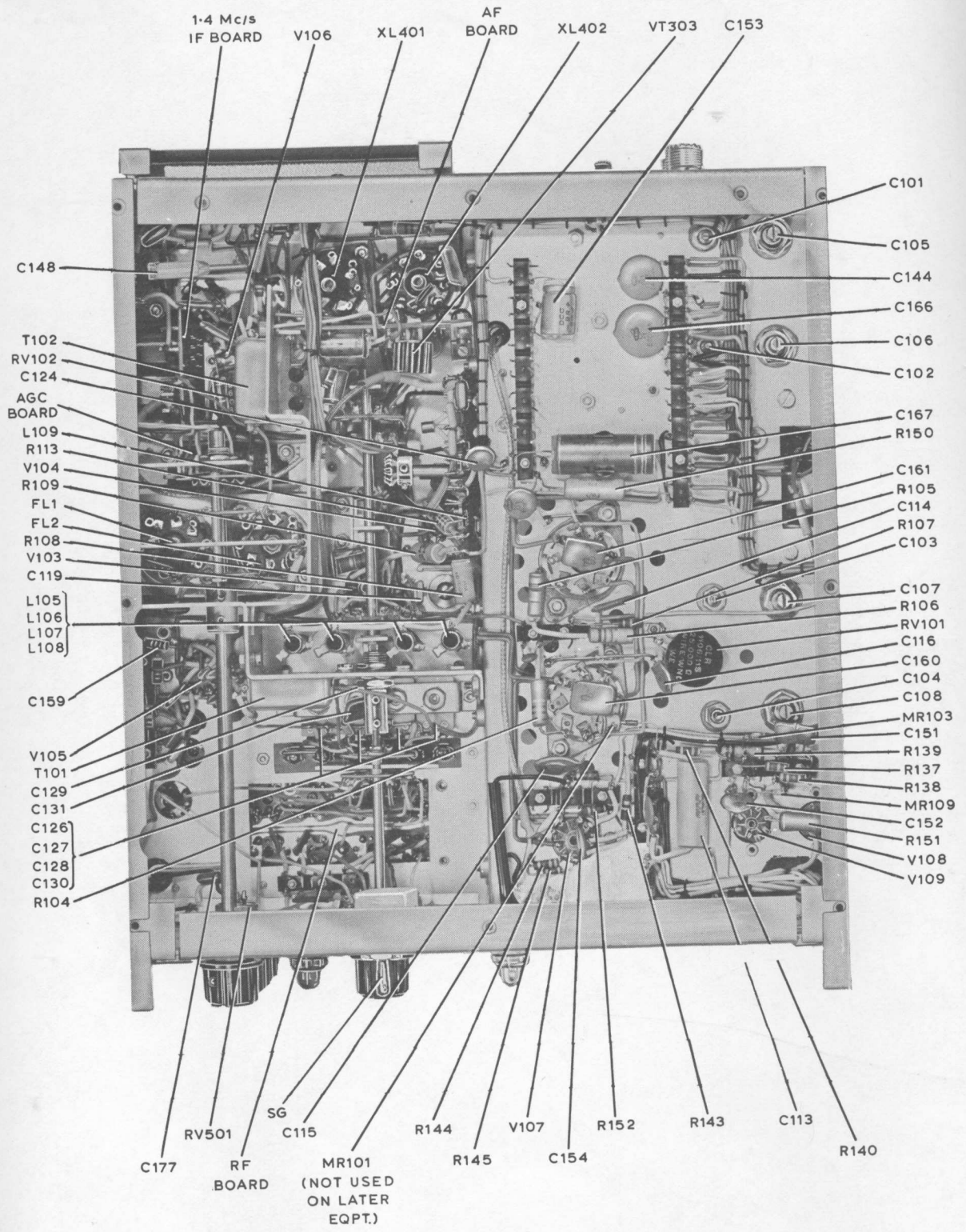
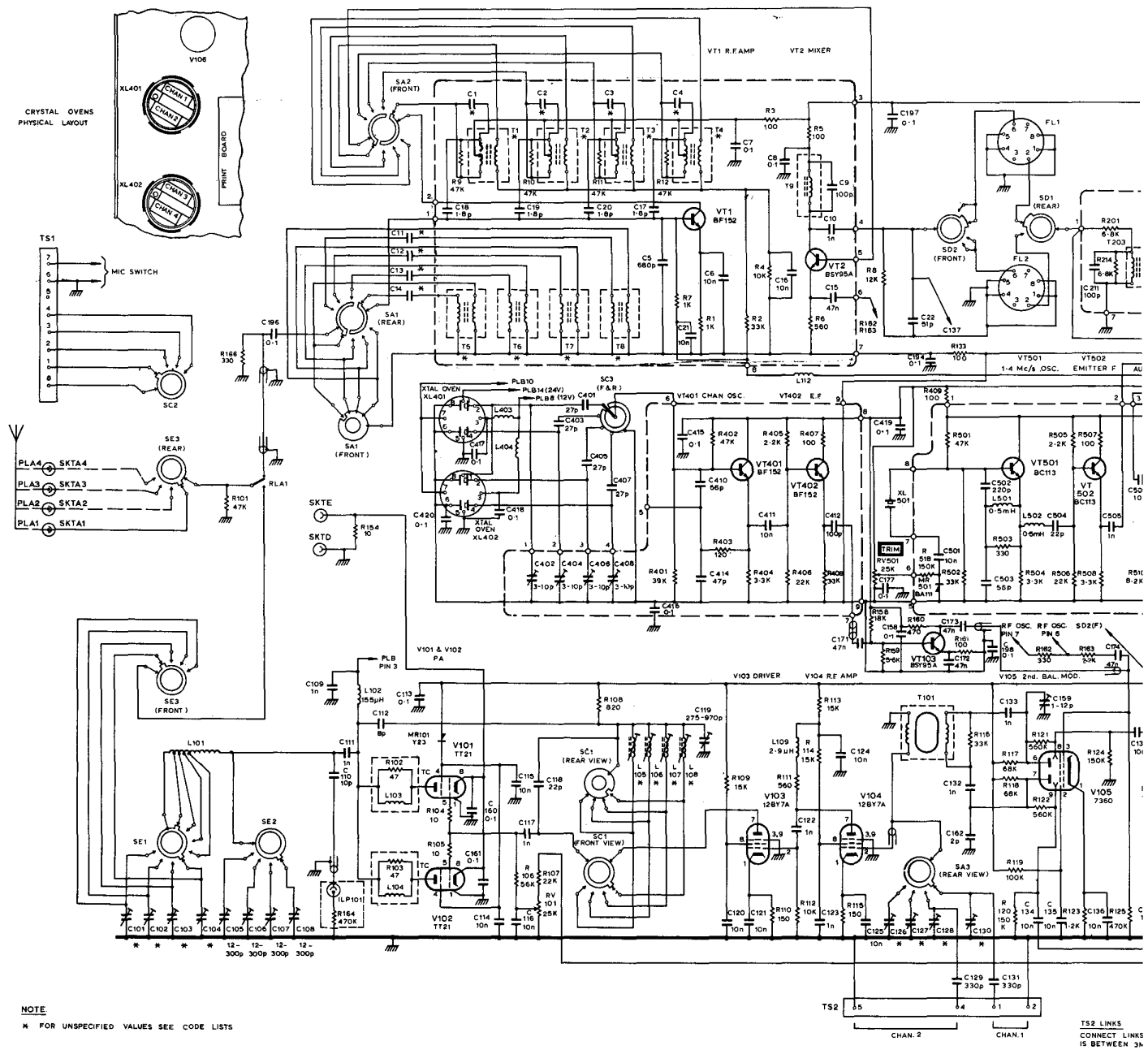


Top Chassis View



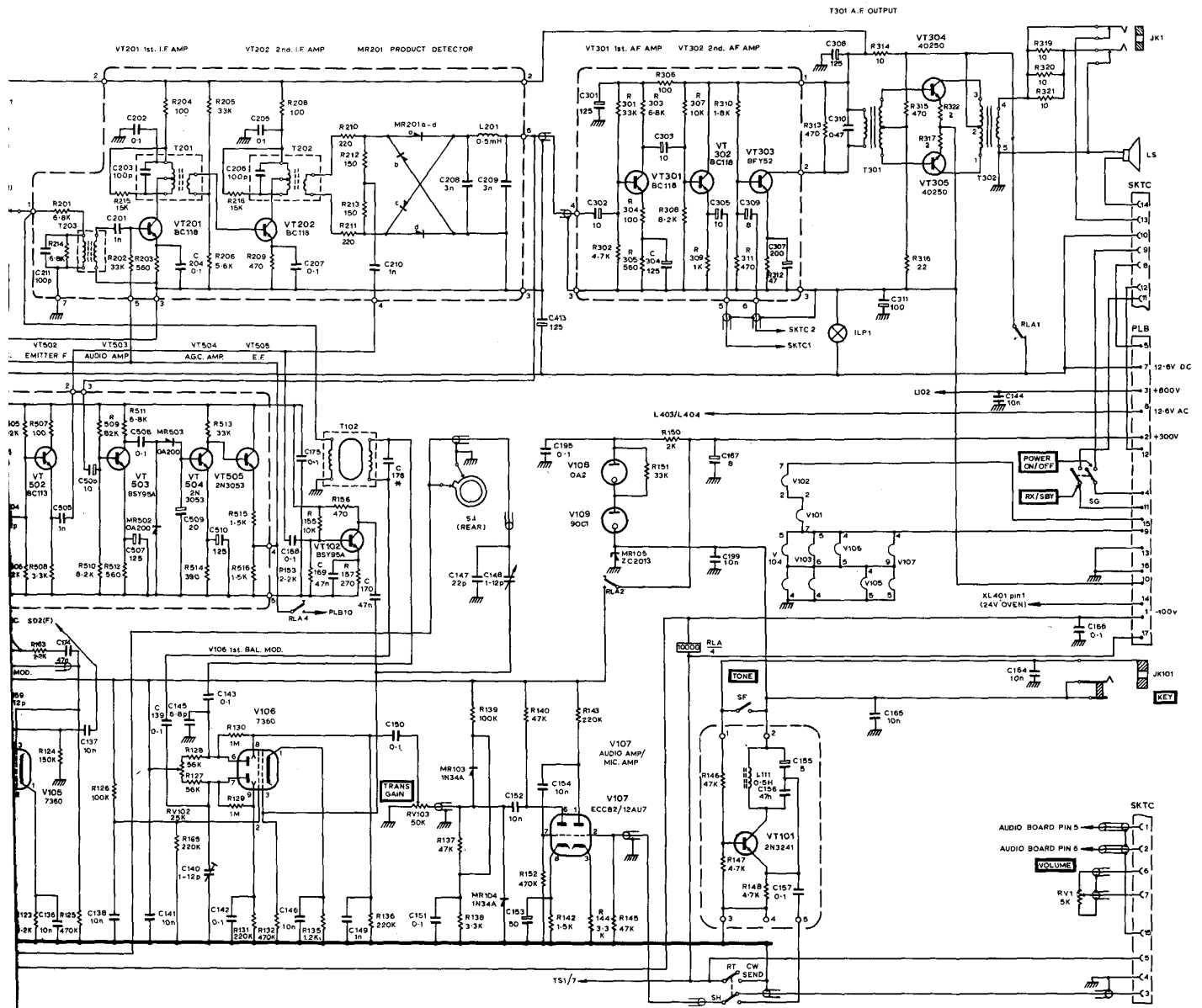
Underside Chassis View

Fig. 1 TRANSCEIVER COMPONENT LOCATION DIAGRAM



NOTE  
 \* FOR UNSPECIFIED VALUES SEE CODE LISTS

TS2 LINKS  
 CONNECT LINKS  
 IS BETWEEN 3N



T52 LINKS  
CONNECT LINKS IF FREQUENCY OF CHAN.  
IS BETWEEN 3Mc/s - 3.5Mc/s.

Fig.2 TRANSCIEVER CIRCUIT DIAGRAM

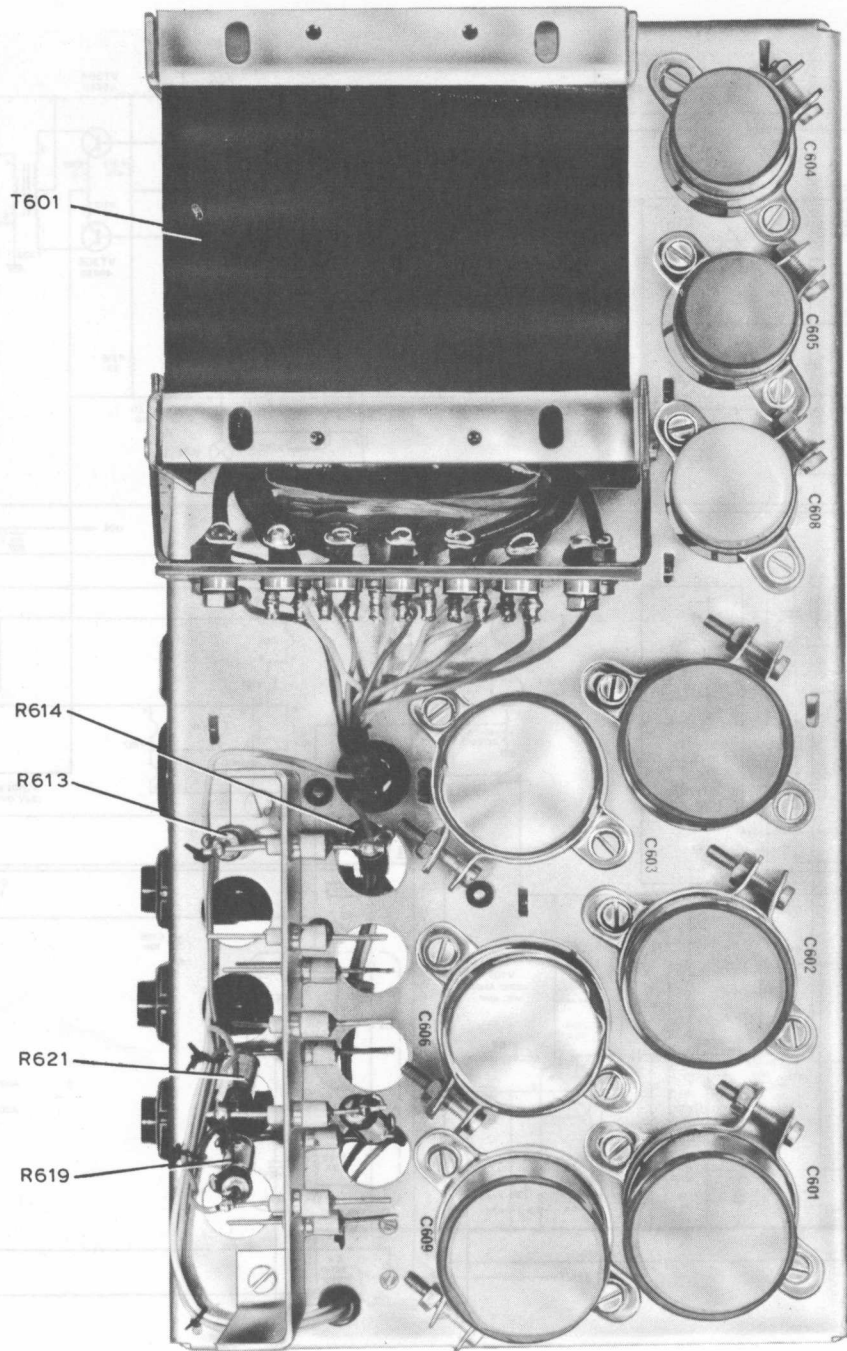


Fig. 5 TRANSCIVER CIRCUIT DIAGRAM

Top Chassis View

MR601-612

C604

R627

C605

R623

MR615

C608

TS6

C603

C602

VT601

C601

C607

R626

MR613

FS601

FS602

FS603

C606

C609

MR614  
a-d

R625

R624

Underside Chassis View

Fig. 3 A.C. POWER SUPPLY UNIT COMPONENT LOCATION DIAGRAM

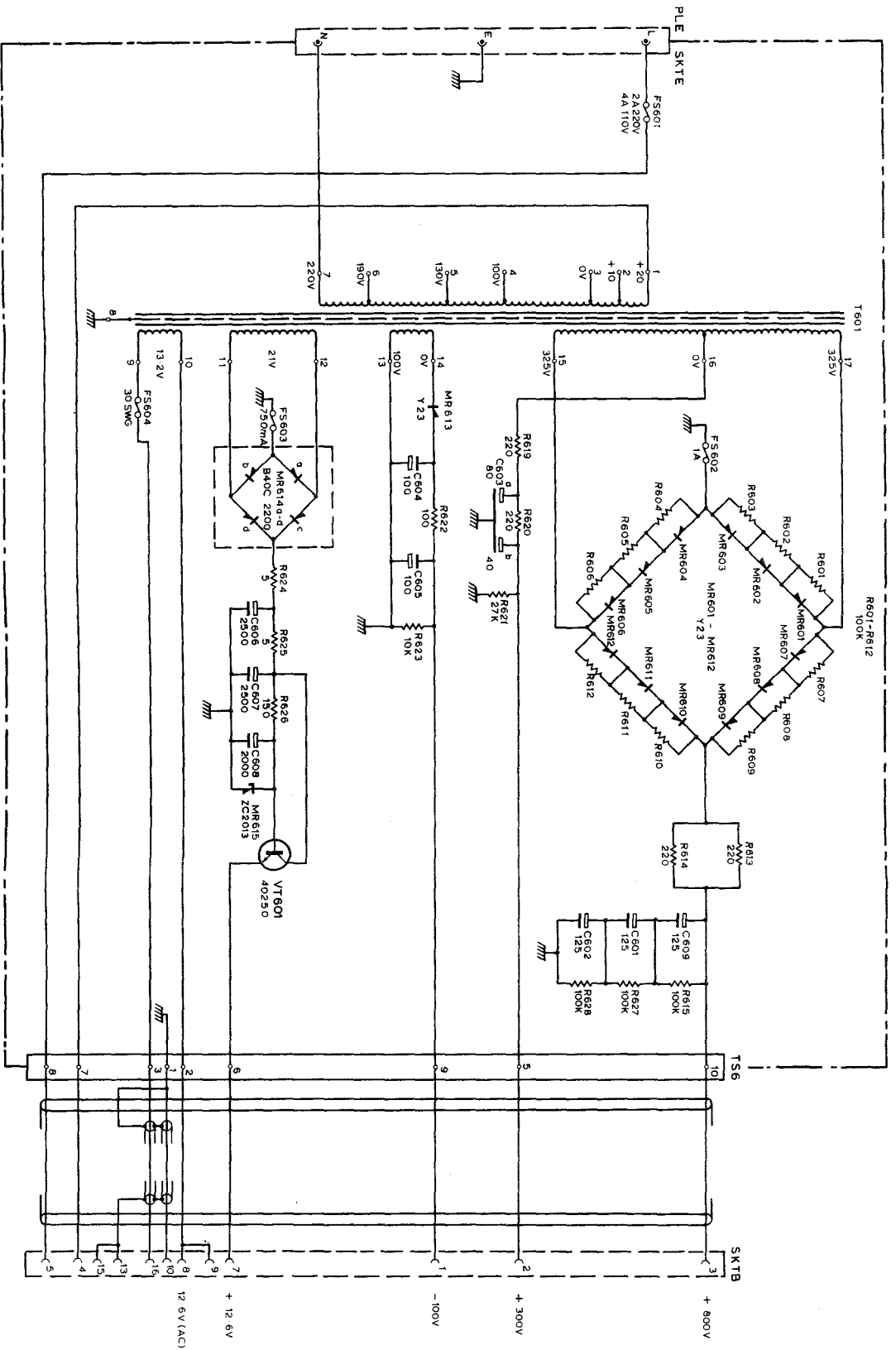


Fig. 4 A.C. POWER SUPPLY UNIT CIRCUIT DIAGRAM

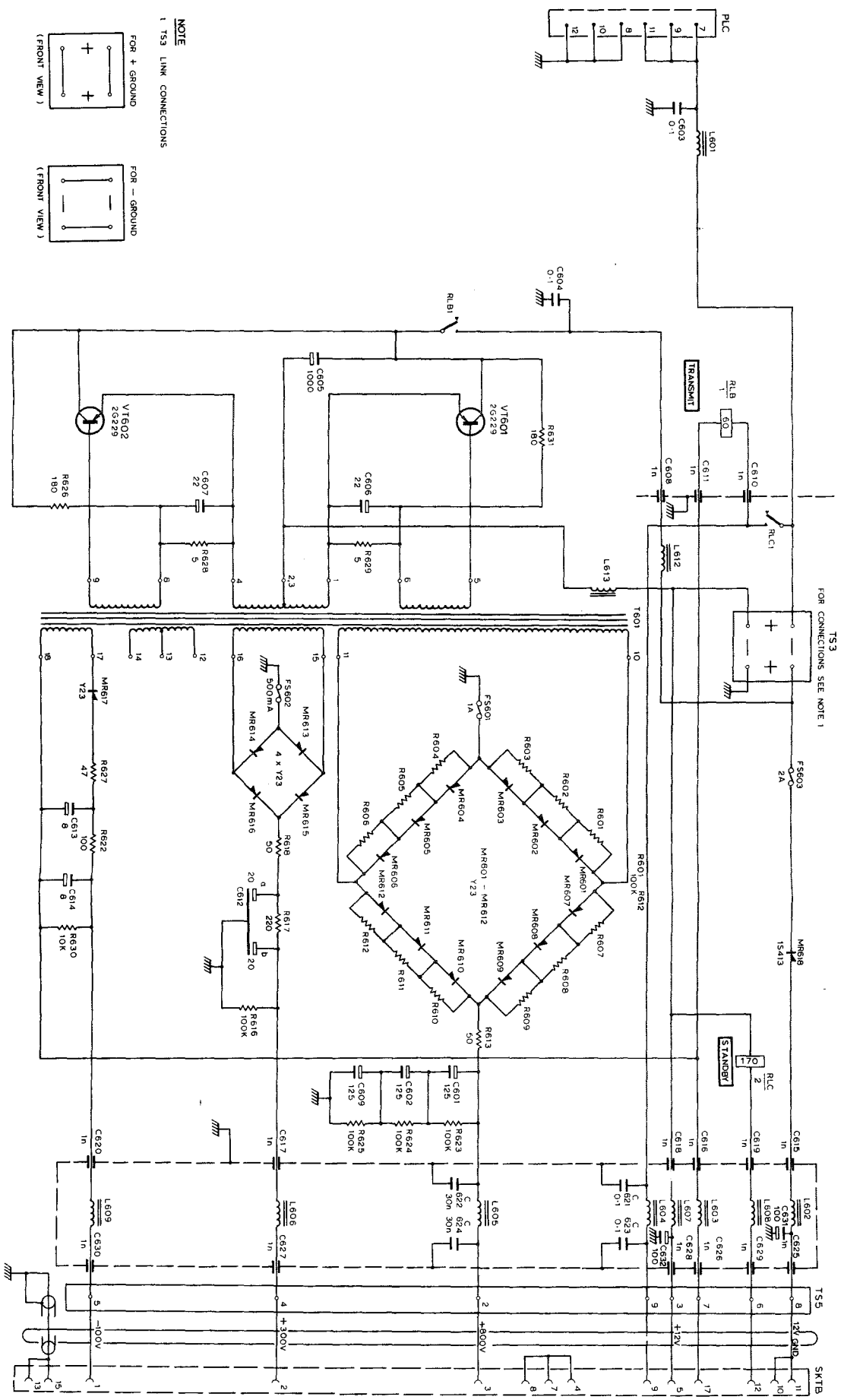
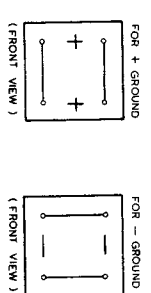


Fig. 6 12 VOLT D.C. POWER SUPPLY UNIT CIRCUIT DIAGRAM



NOTE  
1 TS3 LINK CONNECTIONS



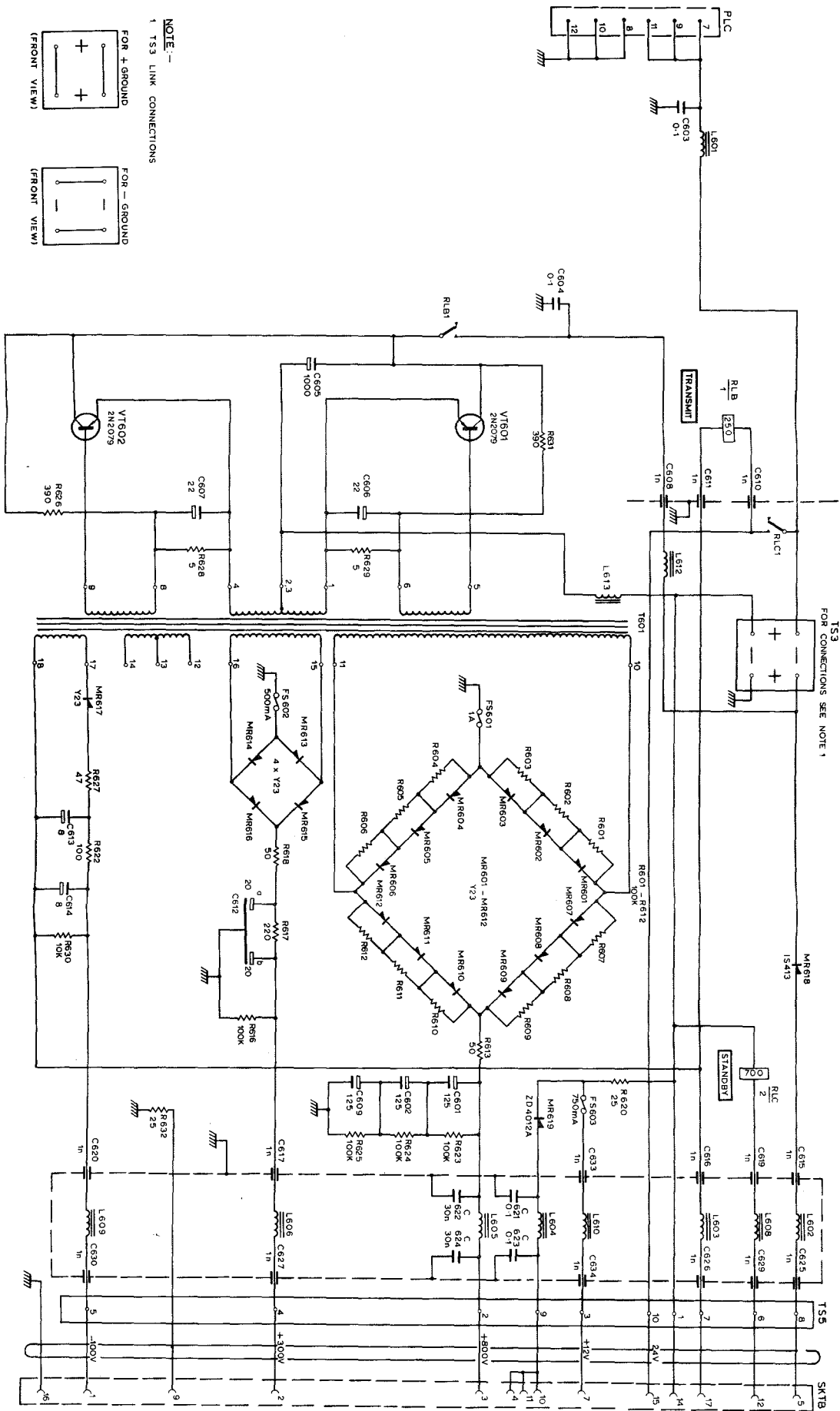
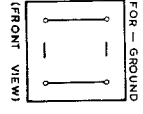
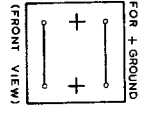


Fig. 7 24 VOLT D.C. POWER SUPPLY UNIT CIRCUIT DIAGRAM

NOTE:-  
1 TS3 LINK CONNECTIONS



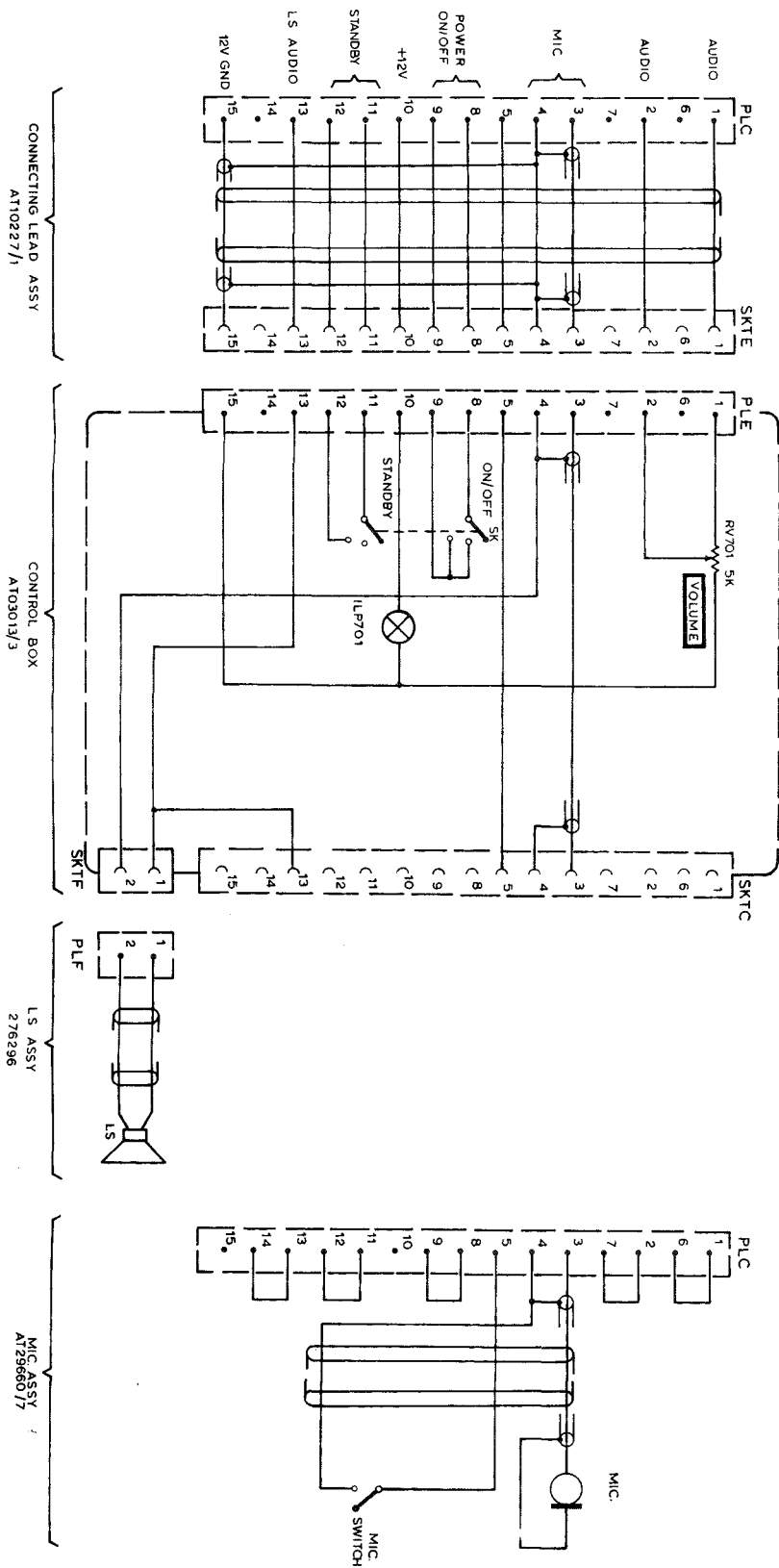


Fig. 8 12 & 24 VOLT LOCAL OR EXTENSION CONTROL DIAGRAM

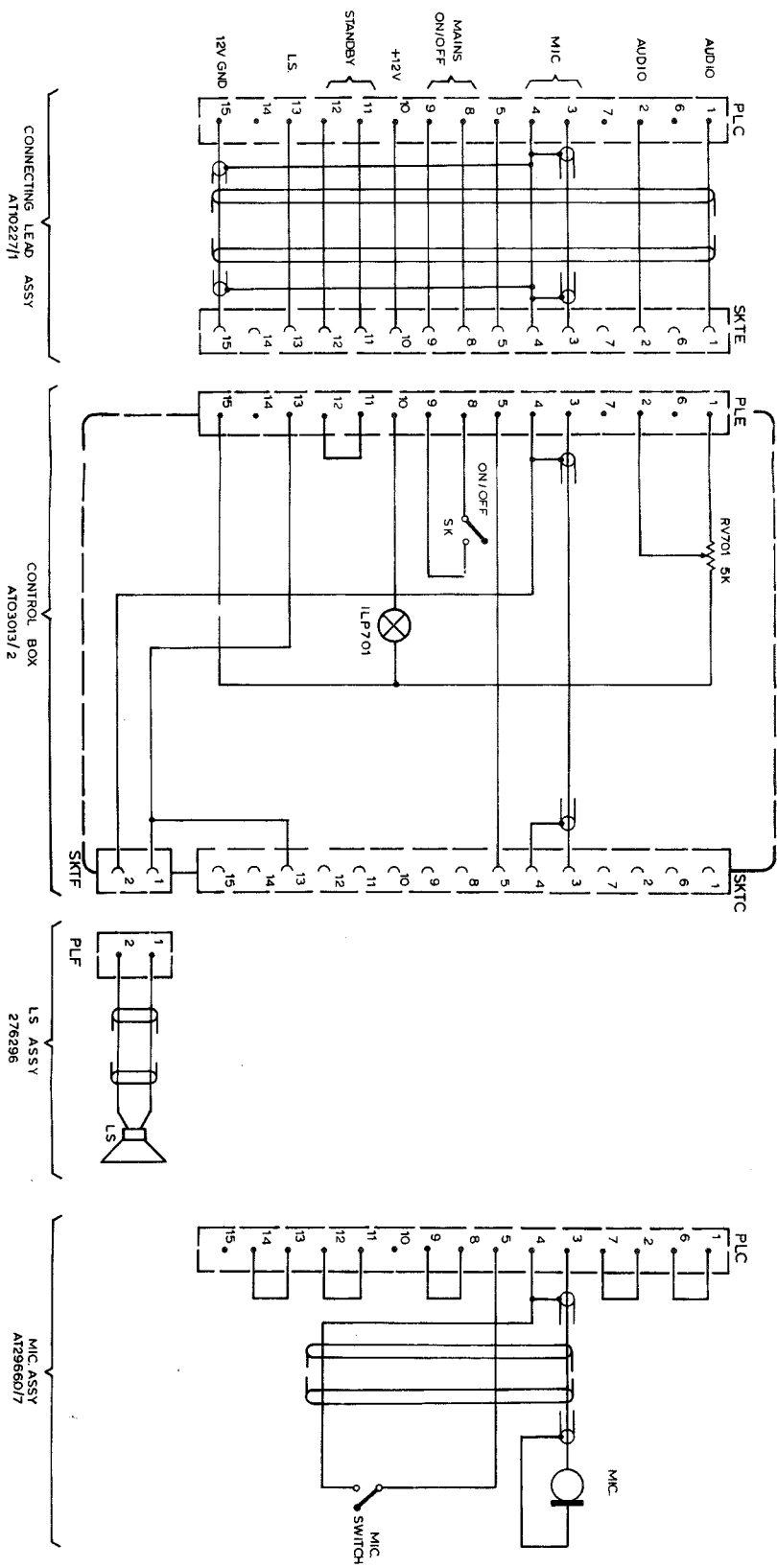


Fig. 9 A.C. LOCAL OR EXTENSION CONTROL DIAGRAM

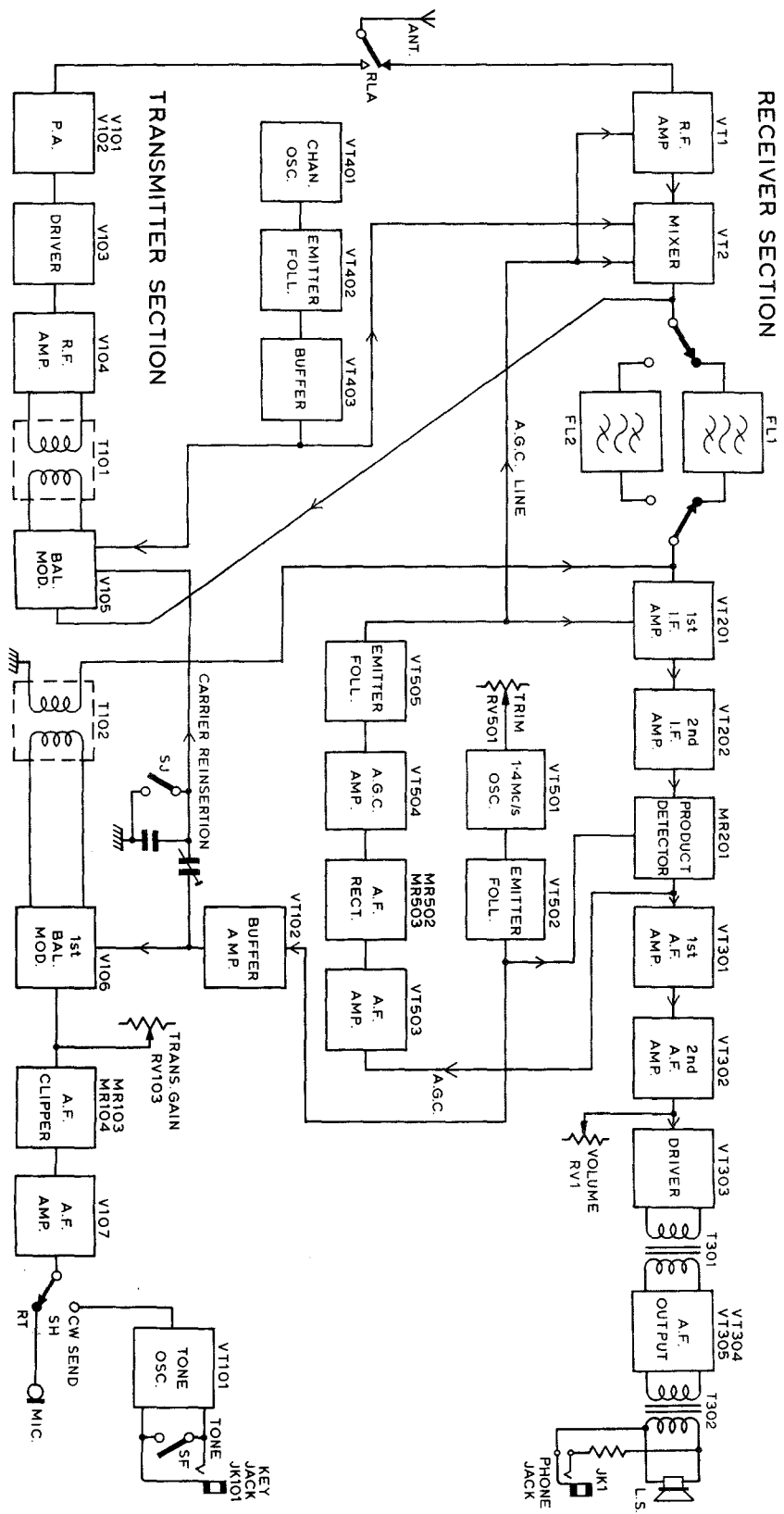


Fig. 10 SYSTEM BLOCK DIAGRAM